



## 2-30 Rose Street Botany NSW

Architecturally impressive from the onset, these premium dual level terraces highlight light-filled domains, state-of-the-art inclusions and a superior lifestyle offering like no other.

Bespoke inclusions, a flexible floorplan and considered design make for a perfect fusion of contemporary and custom and an effortless indoor-outdoor urban lifestyle.

Overflowing with features and highlighted by the warmth of oak timber floors, soaring ceilings, and a neutral colour palette, each residence includes three generous bedrooms across the accommodations level, custom bathrooms and a designer gourmet kitchen featuring Miele appliances.

Nestled in the ever-popular Botany village within strolling distance of vibrant local cafes, shopping, playgrounds, parklands, beaches and primely positioned within an easy commute of Sydney CBD.

### Highlights:

- + Brand new terrace homes ready to move in
- + Stone kitchen, custom cabinetry & full Miele appliance package
- + Oak timber floors to living & wool carpets to upper level
- + Double bedrooms, master with ensuite & terrace
- + Main bathroom with free standing soaking bathtub &

**Price** : FOR SALE!

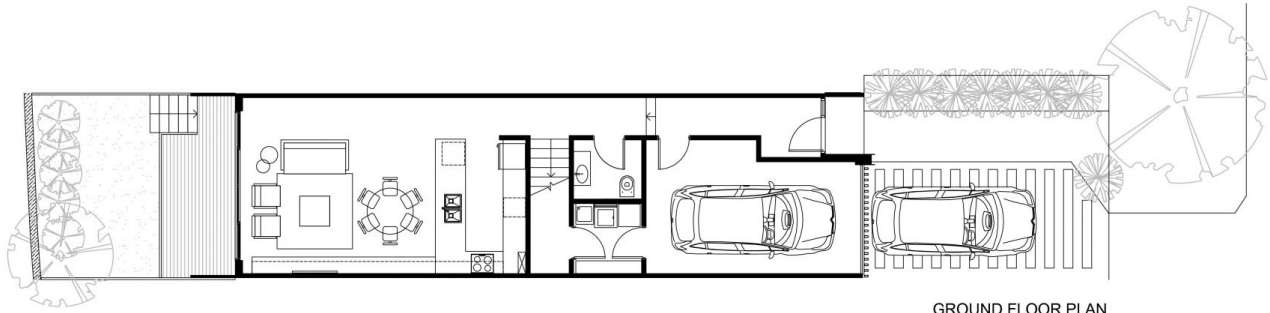
**View** : <https://www.365propertygroup.com.au/7746527>



**Stefan Jones**  
**0403429845**



**Anson Kolb**  
**0403429845**



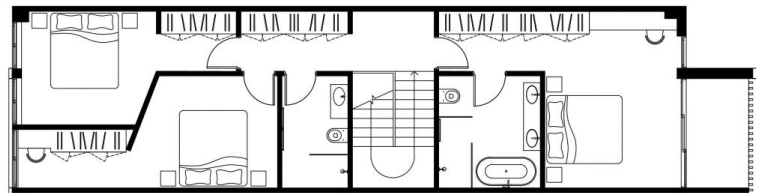
GROUND FLOOR PLAN

## 26 ROSE STREET

3 BEDROOMS + 2 CAR SPACES

COURTYARD	59 sqm
GROUND FLOOR	83 sqm
FIRST FLOOR	95 sqm
<b>TOTAL</b>	<b>237 sqm</b>

All reasonable care has been taken in preparation of this floor plan. To the best of our knowledge, no relevant information has been omitted. However, the Vendor and its appointed agents disclaim all liability should any information or matter contained herein differ from contract of sale or the actual constructed development.



FIRST FLOOR PLAN

