





22/157 Victoria Road Gladesville NSW

2  2  2 

Located in the heart of vibrant Gladesville Village, with an abundance of everyday shopping and eateries at your doorstep, this modern apartment represents contemporary living, amongst a boutique security building.

Positioned high, within the well regarded 'Victoria Apartments' building, and offering breathtaking Sydney Harbour Bridge, Sydney CBD and district views.

Sydney Harbour Bridge, Sydney CBD, New Year's Eve fireworks and the lights of Vivid Sydney are on show throughout the year.

A generous floor plan allows for true open plan living/dining, opening onto an all-weather alfresco terrace.

[For full version visit the website](https://www.365propertygroup.com.au/7732450)

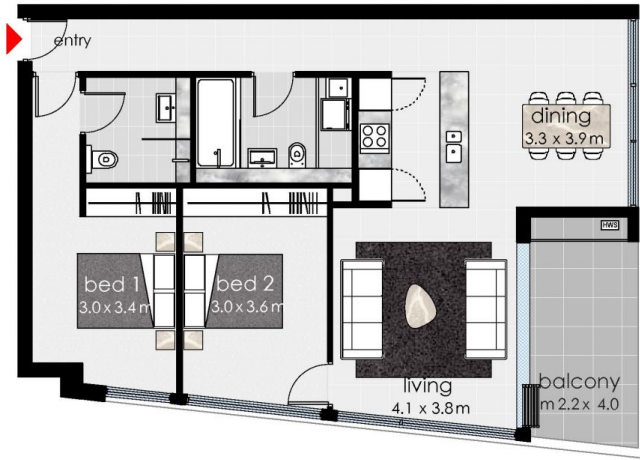
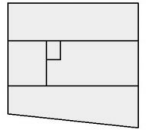
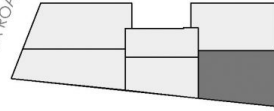
Type : Apartment

View : <https://www.365propertygroup.com.au/7732450>



Anson Kolb
0403429845

VICTORIA ROAD



LEVEL	GF, 01, 02, 03, 04
STORAGE	10
PARKING	01
AREA INTERNAL	88 SQM
AREA EXTERNAL	10 SQM
TOTAL AREA	98 SQM



157 VICTORIA ROAD, GLADESVILLE, N S W

apartment **04,09,14,19,22,24**



THE PARTICULARS OF THIS HANDOUT ARE A GENERAL OUTLINE ONLY FOR THE GUIDANCE OF INTENDING PURCHASER(S), AND DO NOT CONSTITUTE AN OFFER OR CONTRACT. ALL DESCRIPTION, DIMENSIONS, ARTISTS PERSPECTIVES, AND PHOTOGRAPHS ARE GIVEN IN GOOD FAITH, AND ARE BELIEVED TO BE CORRECT, BUT ANY INTENDING PURCHASERS SHOULD NOT RELY ON THEM AS STATEMENTS OR PRESENTATIONS OF FACT, BUT MUST SATISFY THEMSELVES BY INSPECTION OR OTHERWISE CHANGES TO DETAILS OF THE PROJECT MAY OCCUR DURING THE DEVELOPMENT APPLICATION PROCESS AND THE BUILDING PROGRAM.