



16/157 Victoria Road Gladesville NSW

2  2  1 

Located in the heart of vibrant Gladesville Village, with an abundance of everyday shopping and eateries at your doorstep, this modern apartment represents contemporary living, amongst a boutique security building whilst tucked in amongst lush landscaped gardens.

Positioned high within the well regarded 'Victoria Apartments' building, and offering generous water and elevated district views. A generous floor plan allows for true open plan living/dining, opening onto an all weather alfresco terrace.

Features include:

- 92sqm internal open plan layout
- Water and elevated district views
- Premium finishes throughout

Price : SOLD!

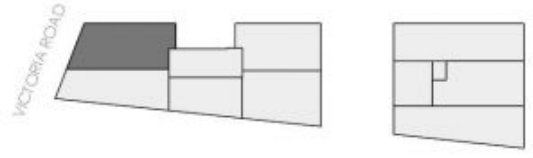
View : <https://www.365propertygroup.com.au/7732443>



Anson Kolb
0403429845



Stefan Jones
0403429845



LEVEL	GF, 01, 02, 03
STORAGE	10
PARKING	01
AREA INTERNAL	90 SQM
AREA EXTERNAL	15 SQM
TOTAL AREA	105 SQM

157 VICTORIA ROAD, GLADESVILLE, N S W



apartment **01, 06, 11, 16**

THE PARTICULARS OF THIS HANDOUT ARE A GENERAL OUTLINE ONLY FOR THE GUIDANCE OF INTENDING PURCHASERS, AND DO NOT CONSTITUTE AN OFFER OR CONTRACT. ALL DESCRIPTION, DIMENSIONS, ARTISTS PERSPECTIVES, AND PHOTOGRAPHS ARE GIVEN IN GOOD FAITH, AND ARE BELIEVED TO BE CORRECT, BUT ANY INTENDING PURCHASERS SHOULD NOT RELY ON THEM. STATEMENTS OR PRESENTATIONS OF FACT, BUT MUST SATISFY THEMSELVES BY INSPECTION OR OTHERWISE CHANGES TO DETAILS OF THE PROJECT MAY OCCUR DURING THE DEVELOPMENT APPLICATION PROCESS AND THE BUILDING PROGRAM.